

Sunflame[®]

Sunflame Enterprises Private Limited.
58, Sector 27C, Mathura Road,
Faridabad-121 003, Haryana, India

For complaint redressal you may either dial (+91) 129-2275723
or e-mail us at customer care@sunflame.com or
write in at the above address.

www.sunflame.com

Cover Back

Sunflame[®]

Oil Filled Radiator
SF- 955 NF/TF



Please read all instructions carefully before using

Cover Front

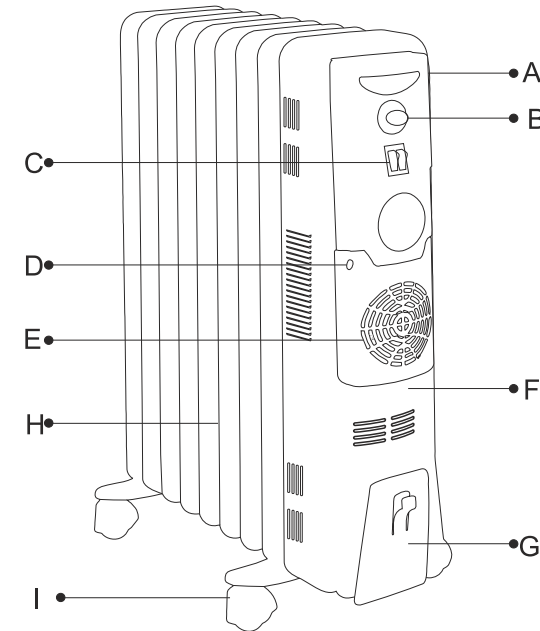
IMPORTANT SAFEGUARDS

To reduce the risk of fire, electric shock, or injury to a person, please read and follow these instructions before using this appliance:

- The product is for household use only.
- Connect the appliance to single-phase AC supply of the voltage specified on the rating plate.
- In order to avoid overheating do not cover the heater. (⊗)
- Never leave the heater unattended while it is in use. Always turn OFF the heater and unplug it from the electrical outlet when not use.
- Extreme caution is necessary when any heater is used near children, mentally challenged or elderly people.
- The heater must not be placed near an electrical socket/outlet while it is in operation.
- Do not run/place the cord of the heater under carpeting and do not cover the cord with loose rugs, runners or something similar. Arrange the cord away from walkways in order to avoid anyone over it.
- Do not operate the heater with a damaged cord or plug, or after the heater malfunctions, has been dropped, or damaged in any manner.
- If the supply cord is damaged, it must be replaced by an authorized service center or a similarly qualified person, in order to avoid a hazard.
- Avoid the use of an extension cord as it may overheat and cause a risk of fire.
- Use the heater in a well-ventilated area. Do not insert or allow objects to enter any ventilation or exhaust openings. To prevent a possible fire, do not block air intakes or exhaust openings in any manner. Do not use the heater on soft surfaces, like a bed where openings may become blocked. Always, use the heater on flat, dry surfaces only.
- Do not place this heater near flammable materials, or substances such as curtains, draperies etc. as there may be a risk of fire. Keep these flammable materials at least 1 meter away from all sides of heater.
- Do not use the heater in any areas where petrol, paint or other flammable liquids are stored e.g. garages, workshops etc. as the heater becomes hot while in operation and this can lead to a very dangerous situation.
- Don't use this heater in immediate surroundings of a bath, shower or a swimming pool. Never place the heater at a place, where it may fall into a bathtub or other water/liquid containers.
- This heater is hot when in use. To avoid and personal injury, do not let bare skin touch hot surface. Always use handle to move the product.

- Always make sure that no other appliances are in use on the same electrical circuit/point as this product. This may cause an overload.
- This heater is filled with a precise quantity of special oil. Never try to tamper with it.
- Any repair required, should be undertaken by an authorized service center. Never try to repair the product by yourself.
- The heater should not be used in a room, which has a floor area of less than 5m².

PART IDENTIFICATION

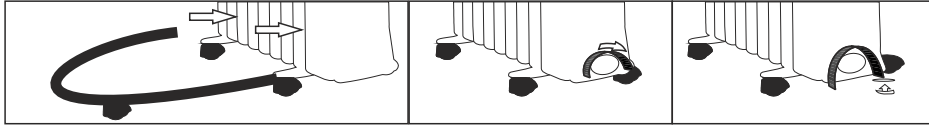


- A. Handle
- B. Thermostat Knob
- C. Power switch
- D. Fan heater switch
- E. PTC Fan heater
- F. Front cover
- G. Cord storage
- H. Radiator fins (9 FIN - 955NF & 13 FIN - 955TF)
- I. Castor wheels

ASSEMBLY INSTRUCTIONS

The heater is packed with the castor wheels/feet unattached. Must attach these before operating the heater.

WARNING: Do not operate without the wheels/feet attached. Always operate the heater in upright position only (wheels/feet on the bottom, controls on the top) any other position could create a hazardous situation.



- 1 Place the radiator body upside-down on a scratch-free surface, make sure it is stable and will not fall.
- 2 Screw-off the wing nuts from the U-shaped wire. Place the U-shaped wire on to the U-shaped flange, between the first and second fins (near/next the front cover).
- 3 In order to attach the castor mounting plate to the radiator body, insert the threaded ends of the U-shaped wire through the (inner) holes on the castor mounting plate.
- 4 Screw the wing nuts back to the U-shaped wire and fasten the wing nuts properly.

Note: Do not over tighten, as this may cause damage to the radiator flange.

- In order to fix the castor wheels, screw-off the spherical nut from the castors, align the threaded shaft to the (outer) of the castor mounting plate, insert it in, and screw-on the spherical nut back again.
- Repeat steps 2, 3, and 4 at the rear of radiator heater, in order to mount the other castor wheel assembly.

Note: The other castor wheel assembly must be mounted between the last two fins.

HOW TO OPERATE & MAINTAIN YOUR OFR

- Before using the heater make sure that it is placed on a flat and stable surface. Damage may occur, if it is placed on an inclined surface.
- Set the power switch at 0 (OFF) position and the thermostat at MIN position then insert the plug into a power socket/outlet/outlet, which is well grounded.
- Rotate the thermostat knob clockwise to MAX position and switch the heater on as per your requirement, i.e., only Switch I for low heat , only Switch II for medium heat and both the Switches at the same time for high heat.
- If you want to expedite the heating process when the heater has just been powered on, push the fan heater switch to “ON” position. The fan heater will start operating and the room temperature will rise quickly. In order to shut the fan heater operation, push the fan heater switch to “OFF” Position.
- When the room has reached the desired temperature, slowly rotate the thermostat Knob counter-clockwise until the pilot light goes off. The thermostat can now be left at this setting. As soon as the room temperature has dropped below the set temperature, the unit switch itself on automatically until the set temperature has been reached again. In this way the room temperature remains constant with the most economical use of electricity.
- If you want to change the room temperature setting, the thermostat knob clockwise to raise the temperature, counter-clockwise to lower it.
- This heater comes with an overheat protection system that shuts off the heater when part of the heater get excessively hot.
- To completely shut the heater off turn all the controls OFF position and remove the plug from the power socket/outlet.
- Never try to unplug the appliance by pulling the power cord. Always use the plug.

MAINTENANCE

- Always remove the plug from the power socket/outlet and allow the radiator heater to cool down before cleaning the heater.
 - Wipe the radiator with a soft damp (not wet) cloth.
- WARNING:** In order to clean-
- Never immerse the heater or its parts in water or other liquids.
 - Do not use any cleaning chemicals such as detergents and abrasives and never use a steel wool/hard scouring pads, as this will damage the product beyond repair.
 - Do not allow the interior parts to get wet as this could create a hazard.
 - To store away the heater, wind the power cable around the cord storage area and store the heater in a clean and dry place.

TECHNICAL SPECIFICATION



MODEL NO.	FIN	RATING	WATTAGE	WATTAGE WIH FAN
SF-955NF	9	230V-50Hz	2000W	2400W
SF-955TF	13	230V-50Hz	2500W	2900W